



Leadership Northern Colorado Larimer County Government





County Basics

- Counties are not rural image of municipalities.
- Arm of the State. Designed primarily to deliver State services at a local level.
- Larimer County is a Statutory county. Weld is a Home Rule County.

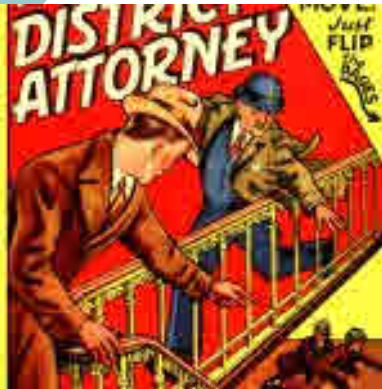
Constitutional Elected Officials

- Ministerial in nature for a specific area/areas (Executive in nature)
- Not legislative or quasi-judicial
- Responsible only to the voters.



Constitutional Elected Officials

- Budgetary responsibility limited to funds allocated by BOCC.
- DA exception



Official of a Judicial District

Utilizes county structure by convenience



Board of County Commissioners

- Serve in three roles
 - Executive
 - Legislative
 - Quasi-Judicial
- Responsible for the fiscal management of the county including budgeting
- No authority over management or outcomes of other elected offices.





Larimer County



○ County Seat - Fort Collins	
○ Population (2010 estimate)	298,000
○ Size	2,640 square miles
○ Miles of County Roads	
○ -Paved	476
○ -Unpaved	596
○ 2010 Assessed Valuation	\$4,047,646,850
○ 2010 County Budget *	\$247,050,638
○ County Mill Levy	22.524
○ Voter Registrations	183,900
○ County Employees	1,572 <small>1,640 in 2010</small>
○ Average Daily Jail Population	490
○ Beds in Jail	520

* Net of transfers

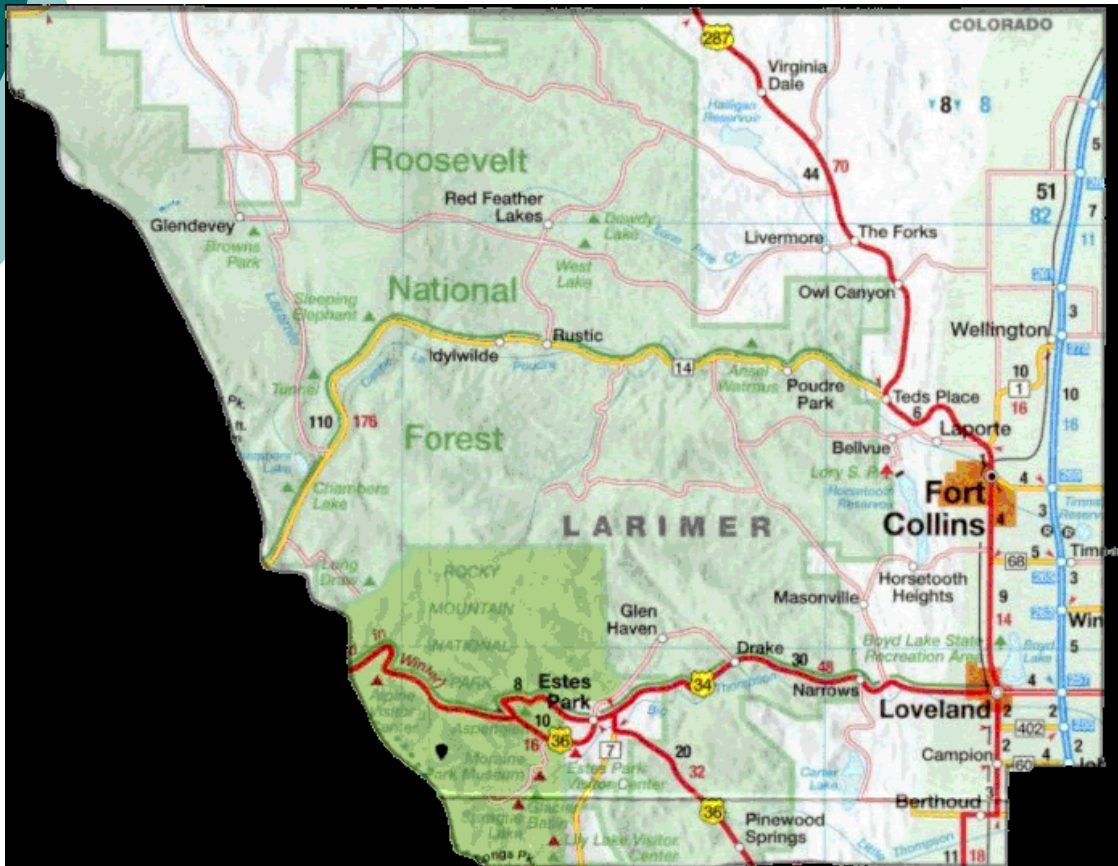
Weld County



○ County Seat - Greeley	
○ Population (2010 estimate)	251,220
○ Size	3,999 square miles
○ Miles of County Roads	
○ -Paved	677
○ -Unpaved	2344
○ 2010 Assessed Valuation	\$4,108,188,970
○ 2010 County Budget	\$193,472,268
○ County Mill Levy	16.804
○ Voter Registrations	112,276
○ County Employees	1,396
○ Average Daily Jail Population	600
○ Beds in Jail	750

* Net of transfers

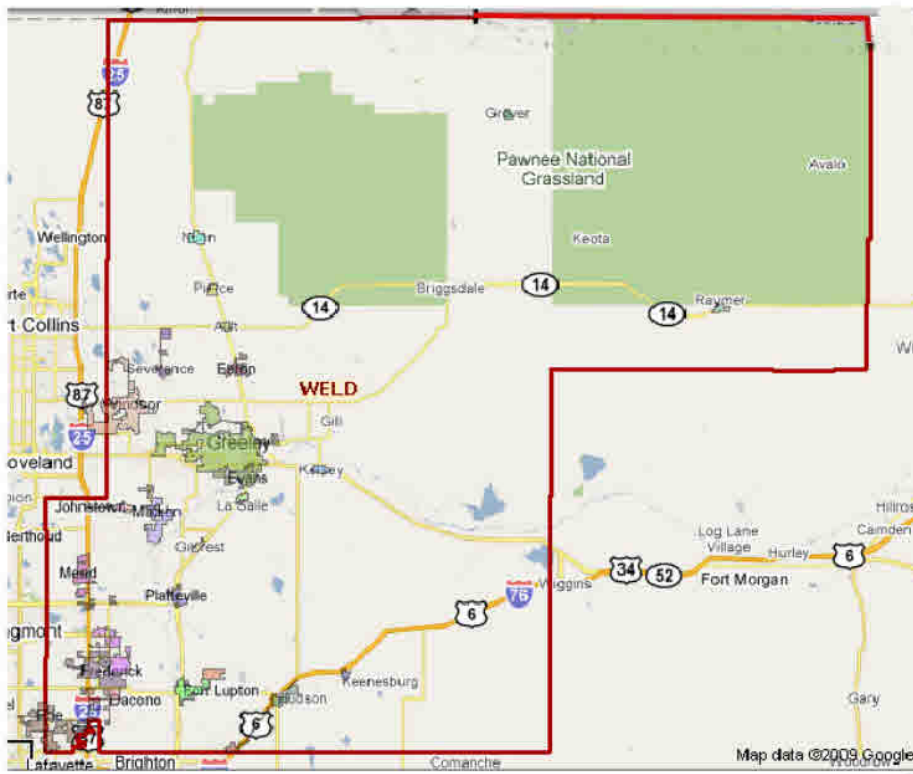
Larimer County



Municipalities

- Fort Collins
- Loveland
- Estes Park
- Berthoud
- Wellington
- Windsor
- Timnath
- Johnstown

Weld County

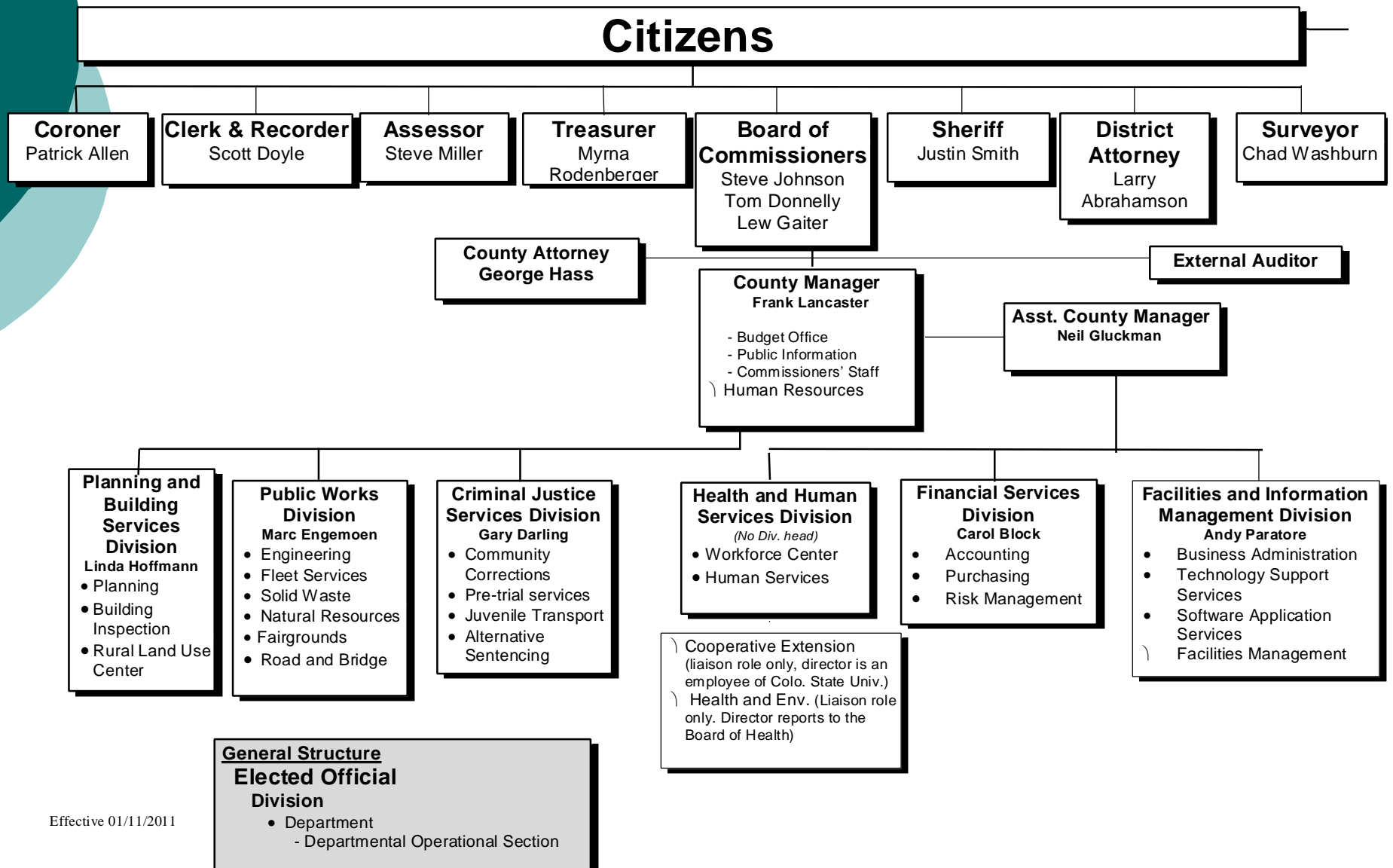


Municipalities:

- Ault
- Brighton
- Berthoud
- Dacono
- Eaton
- Erie
- Evans
- Firestone
- Frederick
- Ft. Lupton
- Garden City
- Gilcrest
- Greeley
- Grover
- Hudson
- Johnstown
- Keenesburg
- Kersey
- LaSalle,
- Lochbuie
- Longmont
- Mead
- Milliken,
- Northglenn
- Nunn
- Pierce,
- Platteville
- Raymer
- Severance
- Thornton
- Windsor

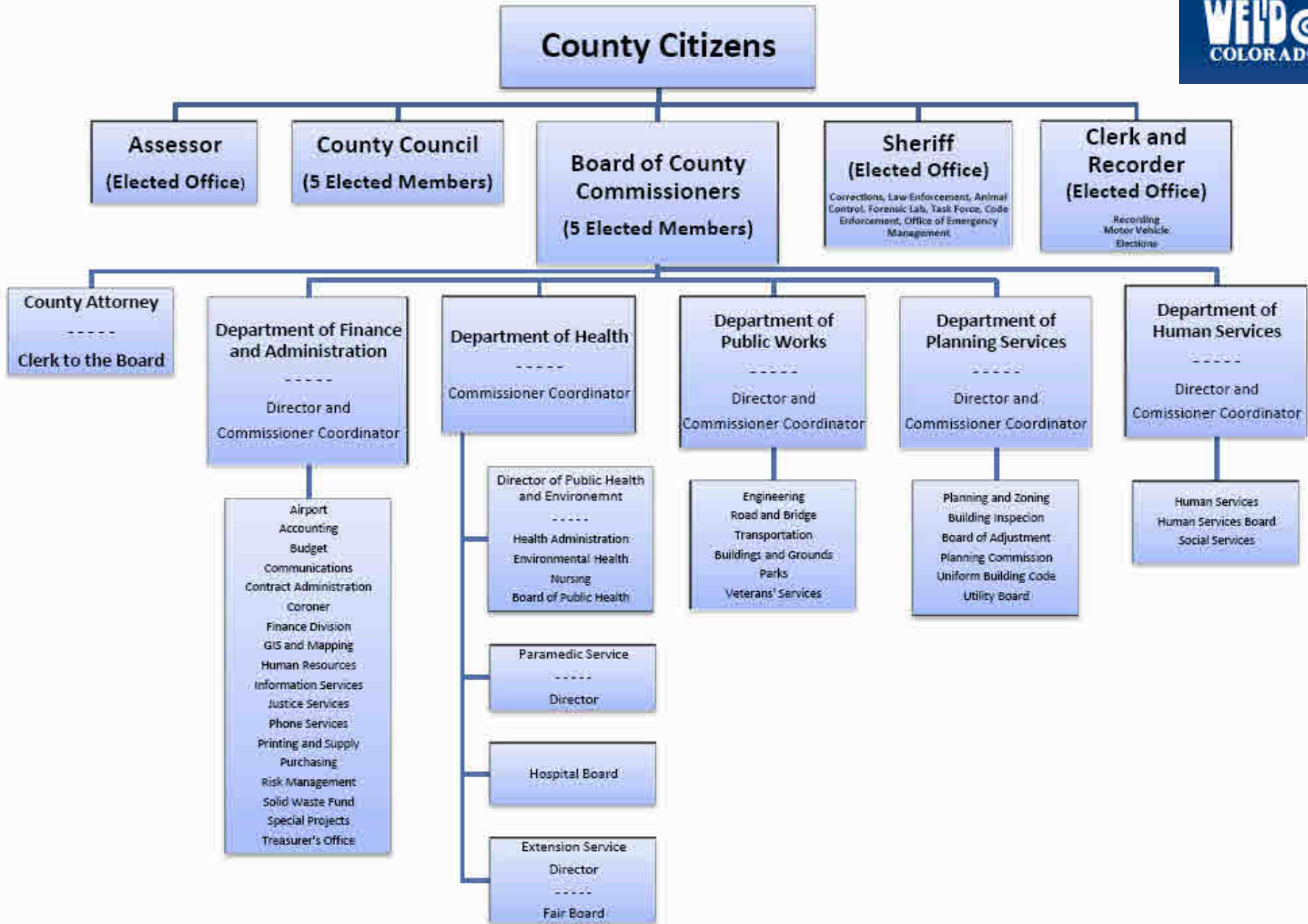


Larimer County Organizational Chart



Effective 01/11/2011

WELD COUNTY HOME RULE GOVERNMENT

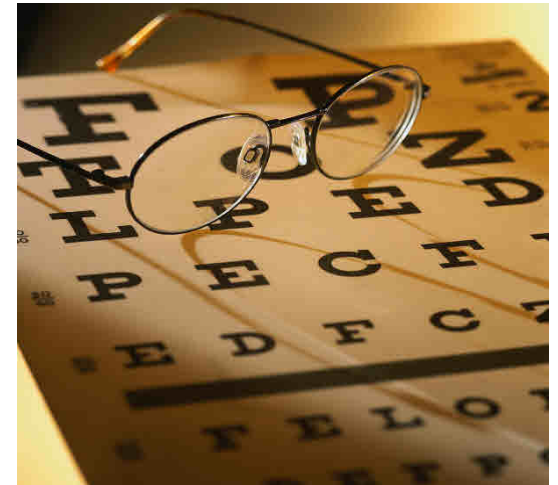


Larimer County Vision



Larimer County will add value to the lives of its citizens by:

- **Building Partnerships**
- **Being customer driven**
- **Empowering People to Take Responsibility**
- **Being a Fulfilling and Enjoyable Place to Work**
- **Being A Good Steward Of Public Resources**



What do We Do?



- a. Landfill**
- b. Child Welfare**
- c. Septic Tank Inspections**
- d. Road Maintenance**
- e. Restaurant inspections**
- f. Food Stamps**
- g. Marriage Licenses**
- h. Probation services**
- i. Purchase burial plots**
- j. Job training**
- k. Fighting Forest Fires**
- l. Run Elections**
- m. Screen juvenile offenders**
- n. Autopsies**
- o. Victims' Assistance Programs**
- p. County Fair**
- q. Track infectious disease**
- r. Maternity assistance**
- s. Potable Water Quality programs**
- t. Community-wide recycling**
- u. Cable TV supervision**
- v. Noxious weed control**
- w. Household Hazardous Waste Disposal**
- x. Jail operations**
- y. Foster Care Coordination**
- z. Veteran's Services**
- aa. Airports**
- ab. Birth and Death Certificates**

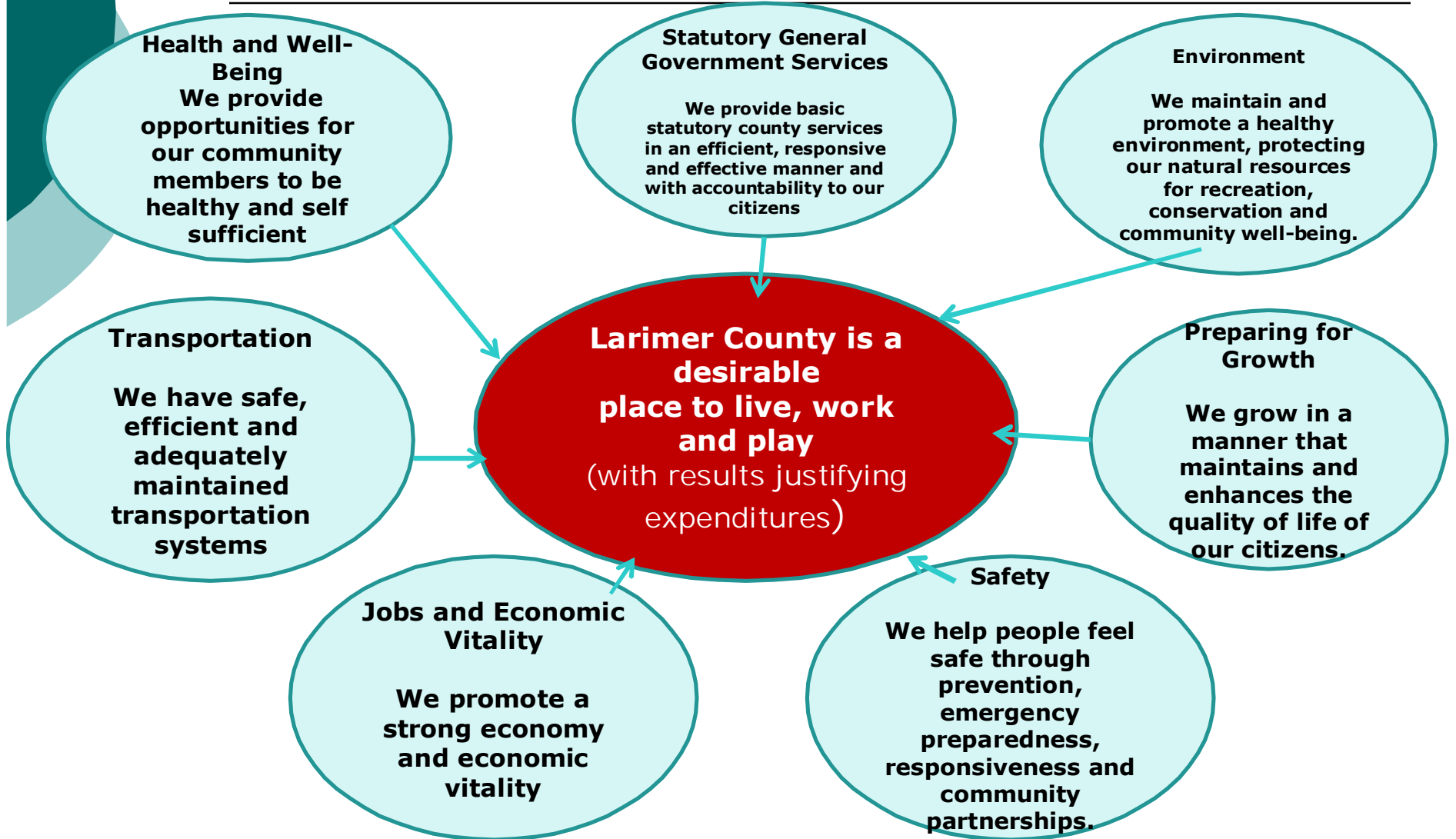


What do We *Don't* Do?



- a. Landfill
- b. Child Welfare
- c. Septic Tank Inspections
- d. Road Maintenance
- e. Restaurant inspections
- f. Food Stamps
- g. Marriage Licenses
- h. Probation services
- i. Purchase burial plots
- j. Job training
- k. Fighting Forest Fires
- l. Run Elections
- m. Screen juvenile offenders
- n. Autopsies
- o. Victims' Assistance Programs
- p. County Fair
- q. Track infectious disease
- r. Maternity assistance
- s. Potable Water Quality programs
- t. Community-wide recycling
- u. Cable TV supervision
- v. Noxious weed control
- w. Household Hazardous Waste Disposal
- x. Jail operations
- y. Foster Care Coordination
- z. Veteran's Services
- aa. Airports
- ab. Birth and Death Certificates



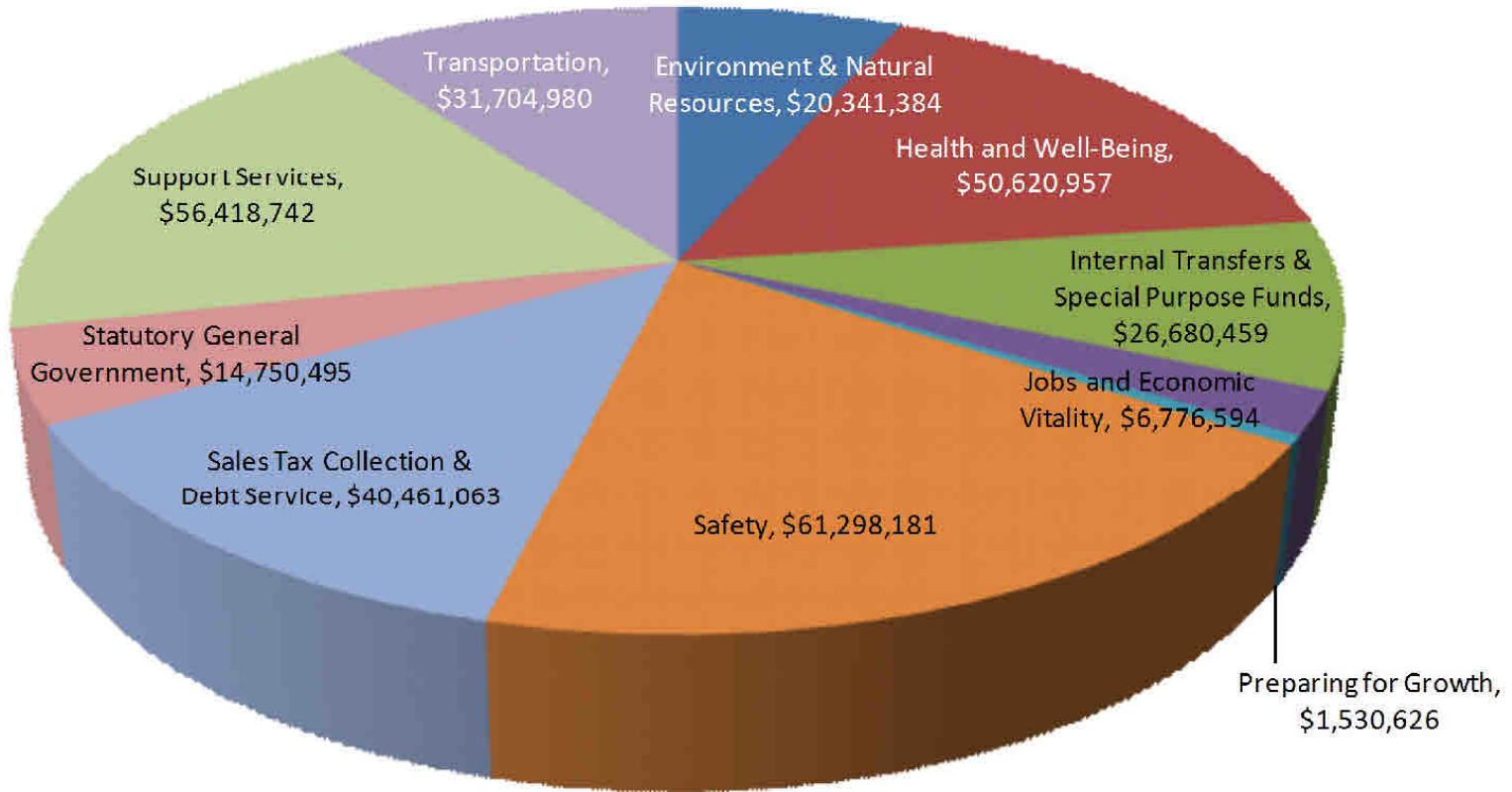


Budget

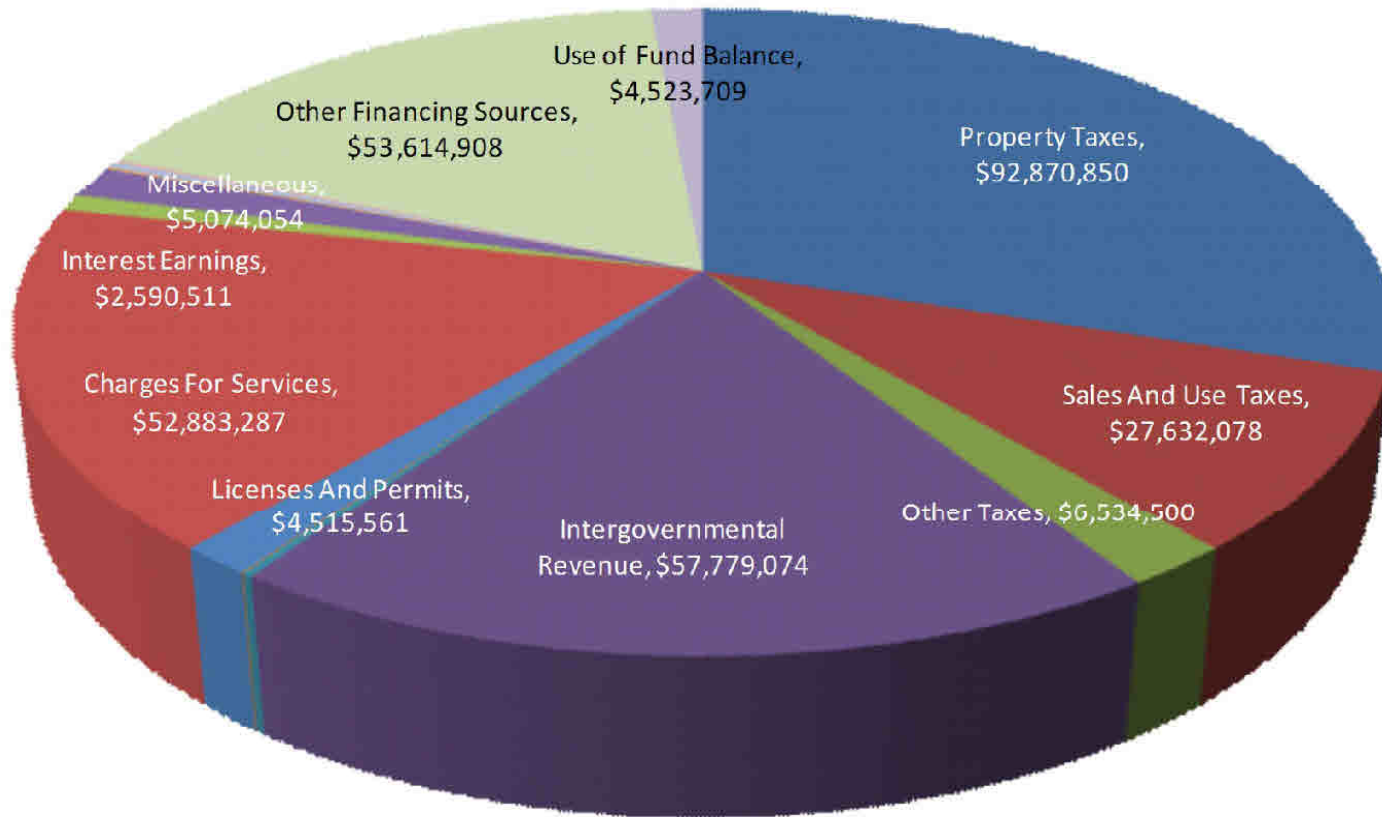
2011 Adopted Budget \$ 310,583,481



2011 Adopted Uses



2011 Estimated Sources



Understanding Your 2011 Local Property Taxes (An example of a \$268,569 Residence)

1. How 2011 Taxes are Calculated:

Note—The County Assessor reappraises all property every two years, tax paid in 2011 is based on non-reappraisal values. For this example, the County Assessor has kept the property value the same as 2010.

Actual Value for 2010 taxes	\$ 276,626
Actual Value for 2011 taxes (same)	\$ 276,626
State Determined Assessment Rate	<u>x 7.96%</u>
Value for Taxation	\$ 22,019.43
Combined Mill Levy	<u>x 83.619</u>
Total Taxes Due in 2011:	\$1,841.24

Note—For 2011, the state will maintain the rate of assessment of residential property at 7.96% of market value.

2. Mill Levy of Taxing Authorities:

	<u>Mills</u>
School District	47.989
County Gov't Services	21.571
County Abatements	0.203
County - Foothills Gateway	<u>0.750</u>
County Gov't Total	22.524
City Government	9.797
Hospital/Health Services	2.167
Other (Water, Library, etc)	<u>1.142</u>
Combined Mill Levy	83.619

Note - The above mill levies (except County) are examples. Each tax entity (where the property is located) will announce its mill levy when it proposes its annual budget. Your actual Combined Mill Levy depends on the location of the property.

Colorado Assessment Rates



Vacant Land:	29%
Residential:	7.96%
Commercial:	29%
Industrial:	29%
Agricultural:	29%
Agricultural Residence:	7.96%
Personal Property:	29%
Mobile Homes:	7.96% (if used as a residence)
Oil & Gas:	87.5 % of production value if primary well - 75% of production value if secondary well



<u>Where the Taxes Go:</u>	<u>For 2008</u>	<u>For 2009</u>	<u>For 2010</u>	<u>For 2011</u>	<u>Change for 2011</u>
Your School District	1030.42	1025.91	1056.69	1056.69	-0-
County Government Services	463.13	462.73	477.49	479.45	1.96
County Foothills Gateway	16.03	16.03	16.51	16.51	-0-
Your City Government	209.44	209.44	215.72	215.72	-0-
Your Hospital/Health Services District	46.33	46.33	47.72	47.72	-0-
Other (Water, Library, etc) Districts	<u>24.41</u>	<u>24.41</u>	<u>25.15</u>	<u>25.15</u>	<u>-0-</u>
Your Total Estimated Tax Bill:	1789.77	1784.86	1839.28	1841.24	+1.96 per Year

How does County Government propose to spend the \$ 479.45 in 2011?

<u>Service Category</u>	<u>Percent</u>	<u>\$ Per Year</u>
Public Safety	45.33%	\$ 217.33
Support Services	21.63%	103.71
Transportation	12.47%	59.79
Health & Well-Being	12.68%	60.79
Statutory General Government Services	5.53%	26.51
Preparing for Growth	1.75%	8.39
Environment & Natural Resources	0.36%	1.73
Jobs & Economic Vitality	<u>0.25%</u>	<u>1.20</u>
Total	100.00%	\$479.45

Future Challenges and Opportunities



Financial Challenges due to economy and the Colorado Tax Structure

- TABOR
- Gallagher
- Tax Increment Financing

Decrease in Property Values



Future Challenges and Opportunities



Possible Reductions in State and Federal funding

- Elimination of Workforce funds
- Loss of energy impact funds
- BOR funding

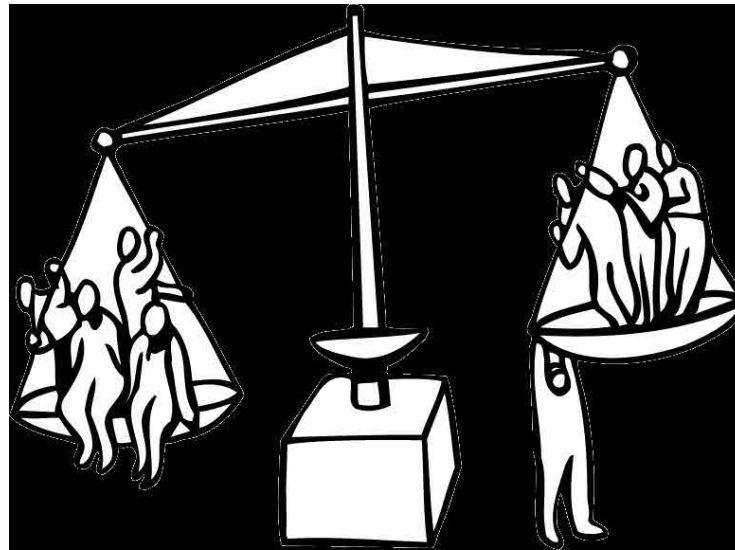


Future Challenges and Opportunities



Criminal Justice Issues

- Need for alternatives to incarceration
- \$14,000,000 cliff in 2014



Future Challenges and Opportunities



Transportation Infrastructure



Future Challenges and Opportunities



Mountain Pine Beetle





Questions

